

HEADSAIL FURLING & REEFING SYSTEMS



>> Your furling system for your navigation program

Facnor team is very much involved in innovation and customer needs. This, as well as the expertise of the most competent skippers, has led to the adaption and improvement of the Facnor headsail reefing system range. For each range, specific features has been developed. Each sailor will be able to find the Facnor furling gear suitable for his navigation : classic drum (LS/LX/RX), webbing drum (FD), continuous line drum (RC) or electrical motorised drum (RMEJ).

GENOA & STAYSAIL

FOUR RANGES OF JIB FURLERS



LS/LX/RX CLASSIC DRUM FURLING
& REEFING SYSTEMS P12

RC CONTINUOUS LINE FURLING
& REEFING SYSTEMS P18

FD WEBBING FURLING & REEFING
SYSTEMS P20 & 21

ELECTRIC MOTORIZED FURLING &
REEFING SYSTEMS RMEJ P24 & 25



Photo : © Marc Ducrey / Chamade

HEADSAIL FURLING & REEFING SYSTEMS



Facnor offers a range of motorized furling and reefing systems for any boat over 9 meters. With these electric furling systems, the headsail becomes easy to handle from the cockpit with any abrupt interruption. This secured device will make your cruising very pleasant...

Quality: our new motor blocks are CNC machined from one piece of aluminium and protected with a hard anodising (40 microns) like all Facnor products. They are also waterproof and therefore maintenance free.

Use: the furling device is small and compact but supplies enough power to furl quickly the Genoa. The drive belt transmission is smoother, more powerful and more efficient than conventional gearboxes. The Facnor electric furling systems are delivered complete with sections, electric furling device, pin and link plates.



RMEJ RATIO MOTOR : MAINTENANCE FREE

The worm gear ensures that the reefed sail does not unfurl. This gear is permanently lubricated and does not require heavy maintenance. The electric furling gear operates quietly thanks to the high precision machining of each part. Incidentally, the gear can rotate either clockwise or anticlockwise



BOXTRON RELAY SYSTEM

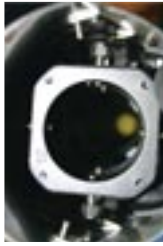
This separate relay box eases the installation and wire connections for the motorization (see page 27)

COMPACT & ELEGANT MOTORIZED UNIT



The aerodynamic design of the electric device does not take up too much room on the foredeck. It enables easier access to the anchor.



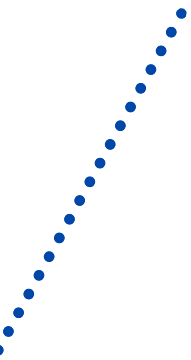


USE OF THE EXISTING FORESTAY

The design of the motorized device can be fitted with the existing forestay (eye or turnbuckle terminal).



photo credit : HINCKLEY 42 DS © Phil Bennett

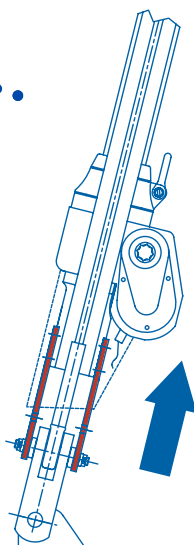


EASY LS-LX TO RMEJ CONVERSION

LS/LX and RMEJ drums are fitted with the same SX foil sections. Therefore it is simple to switch from an LS/LX manual gear to an RMEJ electrical equipment.

FACNOR ADVANTAGES

- Waterproof motorized device therefore maintenance free
- Installation over the existing forestay without any modification
- Low sound level
- Elegant and compact
- Worm gear locks the reefed sail. This gear is lubricated for life.
- Quick connections with Boxtron box (optional)
- Easy switching from LS-LX manual to RMEJ motorized reefing furler
- Light weight
- Available in 12 or 24 volts



HEIGHT ADJUSTMENT

The pre-drilled stainless steel link plates raise the motorized device to a suitable height in order to leave sufficient access for anchor. The link plates that adjust the motorised device can be cut to measure in order to modify the height of the tack.



SAFETY



In case of power failure, the Facnor RMEJ furling system is fitted with a manual back-up device so that you can use a winch

handle or alternatively our emergency continuous line system (see page 27).

THE ELECTRIC FURLING GEAR SUITABLE TO YOUR BOAT

ELECTRIC MODEL	RMEJ 1.02 SX 39	RMEJ 1.02 SX 47	RMEJ 2.02 SX 53
BOAT LENGTH <small>m feet</small>	9 to 13 m 30' to 42'	12 to 18 m 40' to 60'	+ 16 m + 55'
Max. forestay Ø (*turnbuckle necessary)	8 mm - 10 mm* 3/8"	12 mm - 14 mm* 9/16"	14 mm and + + 9/16"
SECTION REF	SX39	SX47	SX53
POWER	400 w**	400 w**	900 w**
SWIVEL REF	CX 39	CX 47	CX 53

** This power develops high performance while consuming low energy, therefore saving batteries.

SECTIONS & SWIVELS
SX SECTIONS

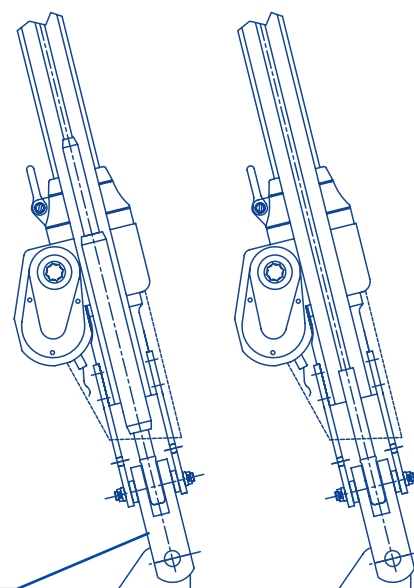
The sections fitted on RMEJ electric system are the same as on the LS/LX range (see page 28). These performance sections ensure a torque resistance even under high loads.

CX SWIVELS

The swivels feature the same quality as the swivel delivered with the RC racing range. They are fitted with bearing box (see page 12 & 13).

USE OF THE EXISTING FORESTAY

The hollow inside of the motorized device allows fitting the existing forestay (even with a turnbuckle bottom terminal). If necessary, it is possible to install the furling gear with the forestay fixed on the mast head. You only need to remove the bottom fixation pin of the forestay (in some cases, you may need to add extra accessories at the bottom of the forestay, see drawing below).


TOGGLE

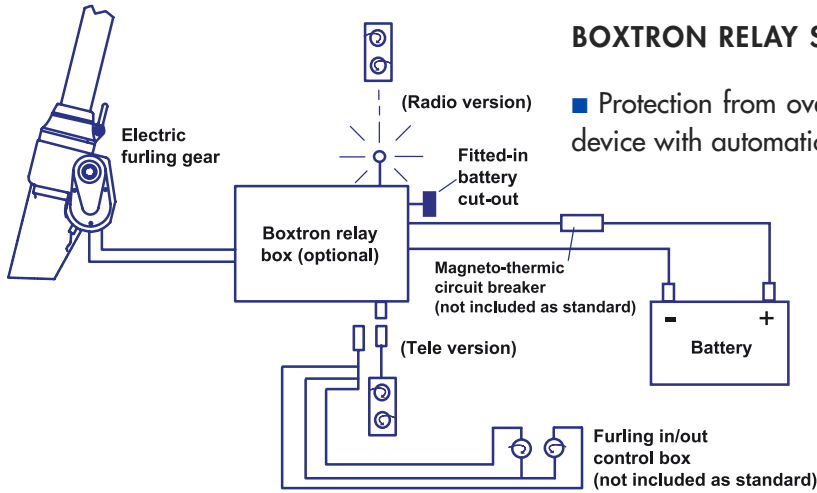
Included in the standard kit





BOXTRON RELAY SYSTEMS

The BOXTRON system is a pre-assembled box containing all electrical components necessary for operating the electric furling gear. This compact system provides added protection for your boat electrical installation. It is available in two versions: "TELE" (wire) or "RADIO" control.



BOXTRON RELAY SYSTEM advantages :

- Protection from overloads by an adjustable electronic cut-out device with automatic reset.
- Sound alarm in case of failure. Control LED's.
- Furling begins slowly then increases quickly with accelerated ramp up.
- Available in two versions: "tele" and "radio" control".



The boxtron system (box above) can be supplied in "tele" or "radio" (wireless) control. In this case, the box cover includes the "radio" device.

EMERGENCY SYSTEM OPTION



Operating in any circumstances

The "FACNOR emergency system" is made up of a notched drive wheel and a continuous line. If an electrical failure were to occur, this device allows the operator to quickly and easily furl in the headsail(standing one meter behind). As the wheel is flat, it is possible to fit it even with a narrow pulpit access. The accelerated emergency operation is an additional safety feature, especially in tough weather conditions. An innovative device with safety at the forefront.



Simple and efficient

The Facnor emergency system is fitted like the emergency handle, with a standard square drive winch socket. Once the wheel is fixed, stand one meter behind the pulpit and pull the continuous line to manually operate the furling system.

TECHNICAL FEATURES

- Corrosion proof
- Auto-locking fitting on to the furling unit
- Adaptable on any standard model of electric/hydraulic furlers
- Constant torque when furling
- Headsail and mainsail easily and quickly furled in case of engine failure
- Shorter than a winch handle then less close to the pulpit
- 12 mm diameter line and protection bag included in delivery

