



Further to constructive technical exchanges with ocean racers, Facnor has developed a sophisticated range of Gennaker/Code Zero furlers : the FX+. A true evolution : light, easy to fit and aesthetic. Fitted on request with a ratchet device securing the furling, locking both clockwise and anti-clockwise (Facnor patent).

The FX+ flying sails furler is an "in/out system".
The anti-twist rope is captive within the sail luff tape.

+ THAN 20 YEARS OF EXPERIENCE IN GENNAKERS FURLERS

- Widely tested & strong mechanisms bodies
- Lightness : optimised system and ultracompact
- Secured sail connection
- Easy to fit and to adjust with simplified use
- Conversion for asymmetrical spinnaker (see page 36)
- Ratchet system

Drum

- large diameter (torque \nearrow) : for a better furling power
- Drum and swivel, machined from one single piece



Torque rope

More anti-twist is the rope, faster is the revolution
(supplied on request).

Secured sail connection Sail / Mechanism

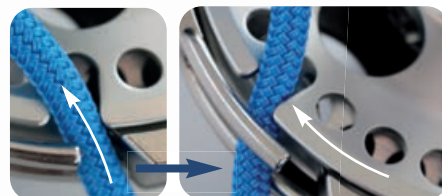
Smooth push spring release device*

+ Captive quick release pin

*(except for FX+900)

Easy fitted furling line

Stainless steel guide



Furling line

Carbon housing

- lighter;
- insures a smooth and perfect run of the furling line (no overriding)

CARBON
LIGHT

Various attachment
(option 2-to-1
see page 38)

Anti-impact cover for swivel

in neoprene (delivered)

high-visibility marking

Thimbles

see page 38

Start and Go Rotation option

drum self-locking device (optional).
Fitted with a ratchet (S/s Duplex)



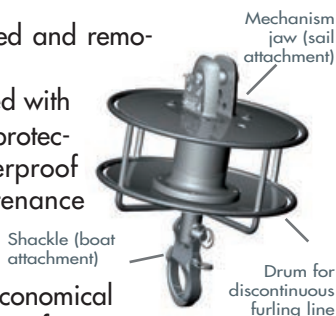
See the video on **YouTube**

Bottom and top adjustable fastenings (see OPTIONS page)

FXT FURLERS WITH DRUM

FXT Gennaker & Code Zero furler

- quickly installed and removed after use.
- The **FXT** is fitted with steel bearings protected by waterproof joints (maintenance free)
- good technical and economical alternative solution for users who prefer a discontinuous furling line.



The main criteria (but not exhaustive) to select the model Gennaker and Code Zero furler model is the loads of the sail (see below) :

FXT Model	FXT 4500	FXT 7000	FXT CUSTOM
Boat length (meters-feet)	9,5 → 16 m 31' → 55'	+ 16 m + 55'	on request
Max. sail area (meters ² - feet ²)	100 m ² 1073 ft ²	200 m ² 2147 ft ²	
Safe Working Load* (tons - lbs)	4,5 T 9920 lbs	7 T 15432 lbs	

* SWL maxi : see note at bottom of page

- The swivel and the drum are fitted with the same bearings (top shackle for halyard fitting).

The Gennaker continuous line furler FX⁺

- are made of one swivel and one flat continuous line drum (maximum luff and no overlapping round the drum).
- carbon house
- half the weight of a standard Gennaker furler.



- **Ratchet system** : Option for FX+1500 → 7000 (retrofit available on most FX+ models)

See the video on



FX⁺ CONTINUOUS LINE FURLERS

The wide FX range from 16' day boat to 200' mega yachts :

FX+ Model	FX+ 900	FX+ 1500	FX+ 2500	FX+ 4500	FX+ 7000	FX+ 12000	FX+ 20000
Boat length (meters-feet)	6 ↓ 10,5	10 ↓ 12	12 ↓ 14	13 ↓ 16	16 ↓ 20	+ 20 ↓	+ 25 ↓
	20 ↓ 30	30 ↓ 40	40 ↓ 45	42 ↓ 55	55 ↓ 70	+ 70	+ 82
Max Gennaker or Code zero area (m ² ft ²)	30 m ²	60 m ²	100 m ²	140 m ²	250 m ²	350 m ²	+ 500 m ²
	322 ft ²	646 ft ²	1076 ft ²	1500 ft ²	2690 ft ²	3770 ft ²	5380 ft ²
Safe Working Load* (tons - lbs)	0,9 T	1,5 T	2,5 T	4,5 T	7 T	12 T	20 T
	1984 lbs	3306 lbs	5511 lbs	9920 lbs	15432 lbs	26455 lbs	44100 lbs
Ratchet	Not available	Option	Option	Option	Option	Contact us	

* SWL maxi : voir note en bas de page

- Leading in Gennaker furler manufacturing Facnor has acquired a long experience on these types of products - tested during ocean races in extremely tough conditions.

Staysail on a FX⁺ furler :



a Staysail can be fitted on a FX⁺ furler so that a stormsail can be used according to the weather conditions. In this configuration, we recommend to install a 2-to-1 block (halyard better tighten and less tension

in the mast).

2-to-1 block option :

See options P. 38

STAYSAILS FITTED WITH FX⁺ FURLERS

FX+ Model	FX+ 1500	FX+ 2500	FX+ 4500	FX+ 7000	Structural furler
Staysail max area indicatives datas (m ² ft ²)	20 m ²	30 m ²	50 m ²	70 m ²	over 70' boat, it is highly recommended to fit a structural furler (see page 24)
	215 ft ²	322 ft ²	538 ft ²	753 ft ²	
Safe Working Load* (tons)	1,5 T	2,5 T	4,5 T	7 T	
	3306 lbs	5511 lbs	9920 lbs	15432 lbs	

* The S.W.L. is the maximum safe working load over which distortions of the furler can appear. This load is approx. 50% of the breaking load (depending on models)



We remind you that an adapted deck attachment must be installed

- FX⁺ for staysails : ideally featted with a locking swivel (see P. 28)

USE CONDITIONS OF THE FX+ FURLER

The **use range** of the sails as shown on the diagram opposite varies with the force of the wind. The complementary use with closer reach headsails is possible, however, under certain conditions (see page 33).

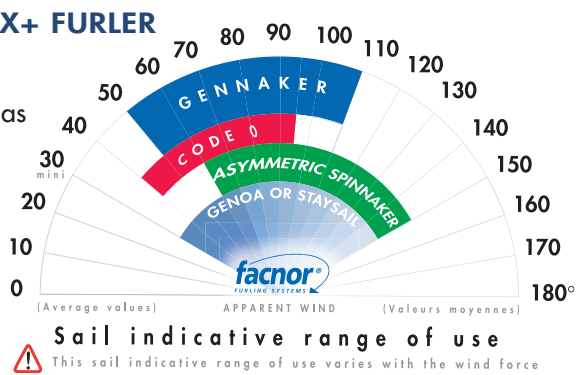


Photo Credit : B. Kolthof / Club Swan

Installation of the FX+ furler



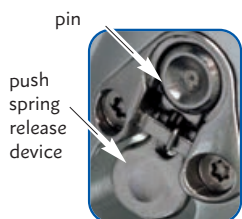
- Lay the furler Gennaker on the deck (fig. 1). Install the furling line round the drum (fig. 2). See below for details;
 - Fasten the upper thimble onto the swivel protected by the a neoprene cover, supplied in the kit (fig.3). Attach the drum onto the chain plate or bowsprit (fig. 4). Adjust the bowsprit and secure with a bridle
 - Check that the halyard is clear, hoist the sail (fig 5), tighten and control the sail sheet (fig 6). Ready!
 - Ratchet system OPTION : From a locked position, release the ratchet by operating the drum by rotating (furling in) half a turn. Once released the sail will unfurl easily
- Note: always keep the reefing line under tension and fit a line stopper. Lower the furler sail after use.

FURLING LINE & QUICK FASTENING DEVICE

Installation of the furling line : through one guide exit fit the line into the round and smooth notch situated on the drum edge. Then, simply turn the drum and the line up to the opposite guide exit. Easy to remove.

Easy installed and stored :<<<

- top and bottom adjustable fastenings : snapshackle or shackle.
- adapted systems for asymmetric Spinnakers and attachments : see page 36.



Fitted-in and secure sail connection :

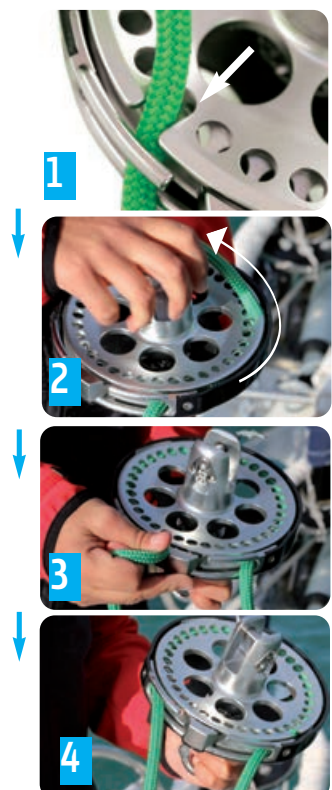
- The sail can be removed from the furler in one "click".
- Smooth push spring release device* with captive quick release pin for FX+ models, except FX+900 secured with clevis pin.

Used for different sails :

As it is very simple to disconnect the sail from the furler and to fit a 2-to-1 block on the swivel, the Gennaker can be quickly changed for the staysail if needed*.

* provided that the loads are equivalent for both sails (voir page 33). Your Facnor agent will advise you on the best possible solution.

REMOVABLE FURLING LINE



See the video on **YouTube** <https://youtu.be/O3r5ra8NDaw>



Furling with the ratchet system :

Lay Furling OUT with the ratchet option on.

From a locked position, rotate the drum half a turn (furling in) to release the ratchet lock. Once released the sail will unfurl easily.

Furling IN with the ratchet option on. Start furling in. If you stop at any time and let go of the furling line, the flying sail will be automatically locked, thanks to the ratchet device. Once ready to resume, simply start furling again. The ratchet in the continuous line drum will be automatically activated from the first rotation.



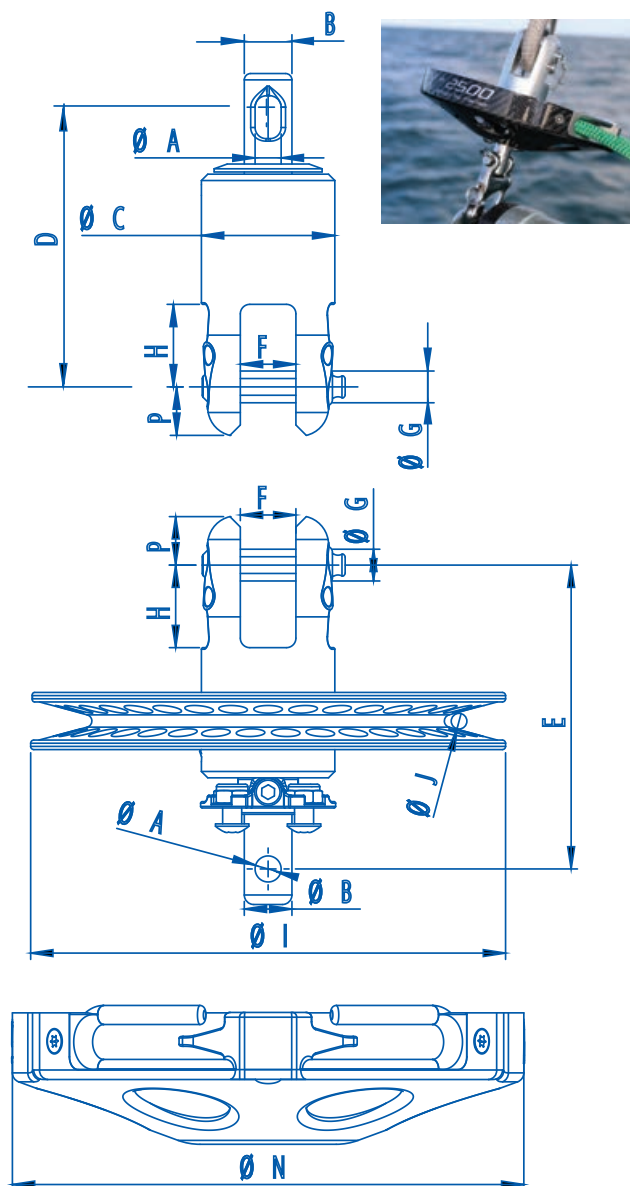
FX+ DIMENSIONS

Rep.	FX+ 900	FX+ 1500	FX+ 2500	FX+ 4500	FX+ 7000	FX+ 12000 Std	FX+ 12000 Racing	FX+ 20000
Dimensions (mm)								
Ø A	6	6	8	10	12	16		20
Ø B	12	12	15	20	25	30		40
Ø C	31	34	42	49,5	60	72		86
D	61	66	88	100	113	125		153
E	74	83	96	110	125	134		161
F	12	15	17,5	19	26	26	22	29
Ø G	8	8	10	12	14	16	18	20
H	18	22	26	33,2	39	43	39	50
I	85	109	149	169	199	248		298
J	6	8	8	10	10	12		12
L	40,5	40,5	62	65,5	88,5	-	-	-
M	35	35	41	52,5	61	78		90
Ø N	95	121,5	161	181,5	212	272		332
P	10,8	11,7	15,3	18,5	19,9	25		28

Standard drum attachment (snap shackle)

Standard swivel attachment (shackle)

Swivel weight (g)	123	153	304	498	709	1320	2540
Drum weight (g)	290	382	709	1026	1459	3040	5140



Important : NEVER SAIL WITH THE GENNAKER OR CODE ZERO PARTIALLY FURLED. ONCE FURLED, NEVER RELY ON THE RATCHET TO FULLY SECURE YOUR SAIL

© Joka Gemesi/ Pauger

