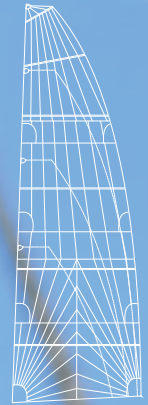


FACSLIDE+  
REEFING LOCKS  
GAFF LOCKS

MAINSAIL



**Full Mainsail set** : Above a certain area, a full batten mainsail needs to be fitted with ball bearing cars for more comfortable cruising. In addition to Lazy-jacks, Facslide® allows easy hoisting, lowering and reefing of the mainsail. Furthermore, the reefing locks completes cunningly this car and track device. For squared mainsails, the gafflock can also help for folding the mainsail.



**FULL BATTEN CAR SYSTEMS FACSLIDE+**

**P48-49**

New!



**GAFF LOCKS FOR SQUARED MAINSAILS**

**P51**

**MAINSAIL REEFING LOCKS & RINGS**



**P52**

The system of recirculating ball bearing cars is designed for full batten mainsail. It helps to raise, lower and reef the sail easily. The FACSLIDE<sup>®</sup> system combined with a Lazy Bag is the installation to handle perfectly your mainsail on your own\*.

\* a 50 m<sup>2</sup> mainsail weights approx. 35 kg for a monohull or 70 kg for multihull.



EB15 (F10,20,30)



ER40 (F40)

New!



Safety-clip device (similar to the FX Gennaker furlers)

**ADAPTABILITY & RELIABILITY**

FACSLIDE<sup>+</sup>

- Fitting to the mast without modification: tracks easily fixed with slugs
- Strength: monobloc design of the car
- Toggle with large articulation and fitting most of batten boxes
- The cars are supplied with tordon<sup>®</sup> balls and safety clip device (FL10, FL20, FL30)
- FR25x15, FR40: flat and light tracks, hard anodizing (40 microns)
- Compact & economical: Possibility of mixing the car models in order to lower the sail stack height when the cars are down (Facnor patent).

**Top and bottom stoppers (EB15, ER40)**

Delivered in the FACSLIDE<sup>®</sup> kit, these stoppers prevent the cars from sliding out of the tracks.

**Headboard cars (FT10, FT20, FT30, FT40)**

can be fitted on the head board of the existing sail or simply on a ring

**Gafflock option**

Mainsail autolocking 2T5 and 4T (see p.52)

+ than 180°



toggle with large articulation

**Monoblock cars**

The FACSLIDE<sup>®</sup> cars are CNC machined in one block of aluminium, this makes them shock-proof when lowering the sail.

**Automatic reefing**

- Reefing the mainsail is easy as the effort for tightening the halyard are limited.
- As a complementary boom option Facnor supplies the F40 outhaul foot car. (ref. 540 204 008 20)

**Tracks fitting to the mast without modification**

The tracks are easily fixed with slugs alongside the existing mast without unstepping (see page 48).



Photo: © Morris Adant / Garcia - Grand large yachting





### FACSLIDE+ MODEL SELECTION

Facslide Model	Track Reference*	MONOHULL Mainsail area	MULTIHULL Mainsail area
F 10	FR25x15	45 M <sup>2</sup>	40 M <sup>2</sup>
F 20	FR25x15	60 M <sup>2</sup>	55 M <sup>2</sup>
F 30	FR25x15	85 M <sup>2</sup>	70 M <sup>2</sup>
F 40	FR40	130 M <sup>2</sup>	90 M <sup>2</sup>



\* with screws and slugs

#### ■ Cars references :

- Batten cars : FL10, FL20, FL30, FL40.
- Intermediates cars : FI10, FI20, FI30, FI40.

#### ■ Compact Facslide set :

- FACSLIDE<sup>®</sup> set includes : tracks, headboard, batten and intermediate cars.
- for a reduced cars height when mainsail lowered, it is possible to mix different car models

### INSTALLATION OF THE TRACK WITH THE SLUGS

■ **No modification of the mast :** The tracks are easily fitted to your mast with slugs without unstepping and modifying it. The various types of slugs ensure the compatibility of our system to most existing mast grooves. The tracks are CNC drilled with high precision. Made of aluminium extrusion, they are also perfectly straight.

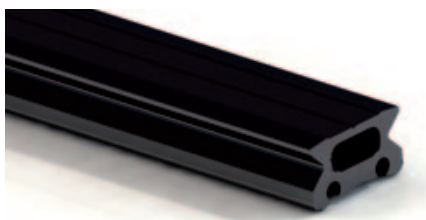


- Two types of slugs : flat and round
- Various sizes available (see chart p. 48 or ask to your Facnor dealer)

■ **Tracks :** Two types of tracks according to the mainsail area :

#### FR+ 25 x 15 Tracks for F10-20-30 cars

- Length = 2 meters
- anodization (black) of the tracks : 40 microns.



#### FR40 Tracks for F40 cars

- Length = 1,7 meter
- colorless anodization



- installation of the tracks : see against
- dimensions page 50.



#### Salted water at the head...

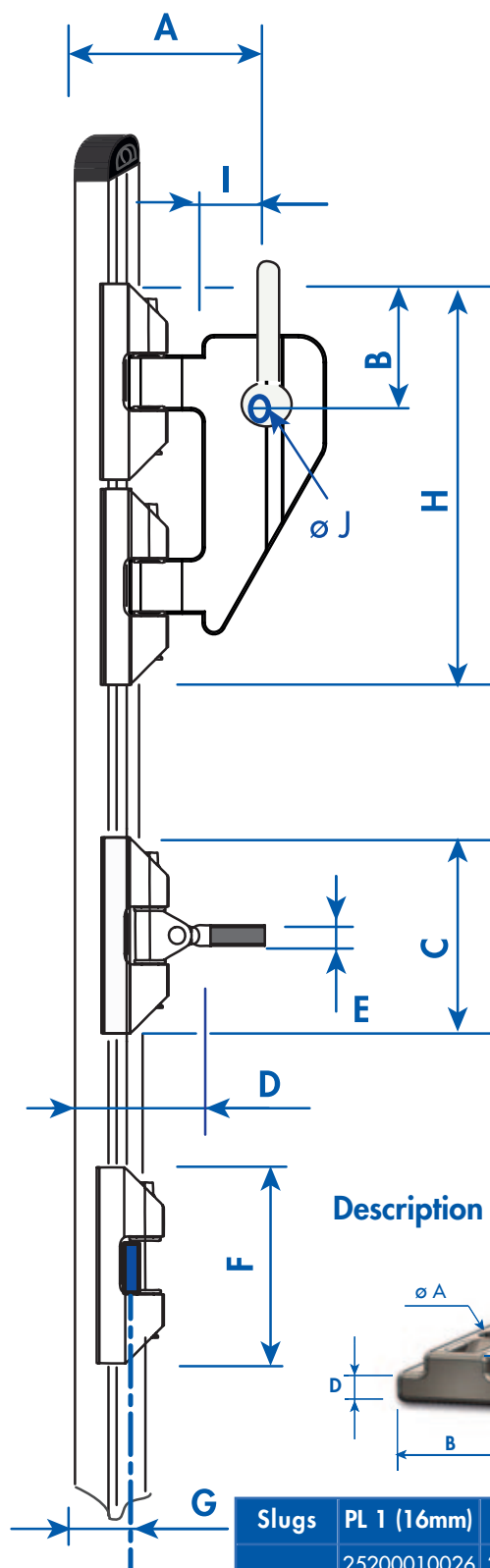
Even though the head cars are positioned 10 meter high, they receive sea water, therefore do not hesitate to rinse the cars with fresh water.

Facnor advice: once a year put a drop of washing up liquid on the car balls.



Lower mainsail with Facslide system combined with lazy Jack

FACSLIDES + DIMENSIONS

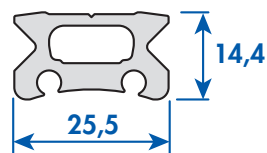


F10+	
Track ref.	FR 25x15
Marks	Dimensions (mm)
A	72
B	45
C	74
D	58
E	M10
F	64
G	26
H	162
I	38
ø J	8

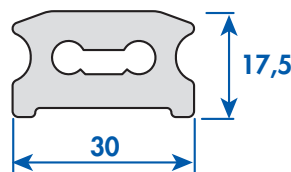
F20+ F30+		
Code Rail	FR 25x15	FR 25x15
Marks	Dimensions (mm)	
A	72	115
B	50	98
C	84	94
D	58	60
E	M10	M10
F	74	94
G	26	28
H	172	197
I	35	40
ø J	8	18

F40+	
Track ref.	FR 40
Marks	Dimensions (mm)
A	120
B	150
C	140
D	120
E	M12
F	85
G	37
H	300
I	39
ø J	18

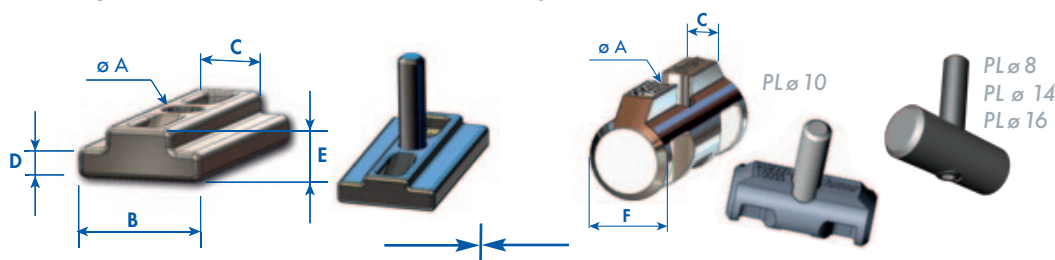
F10-20-30



F40



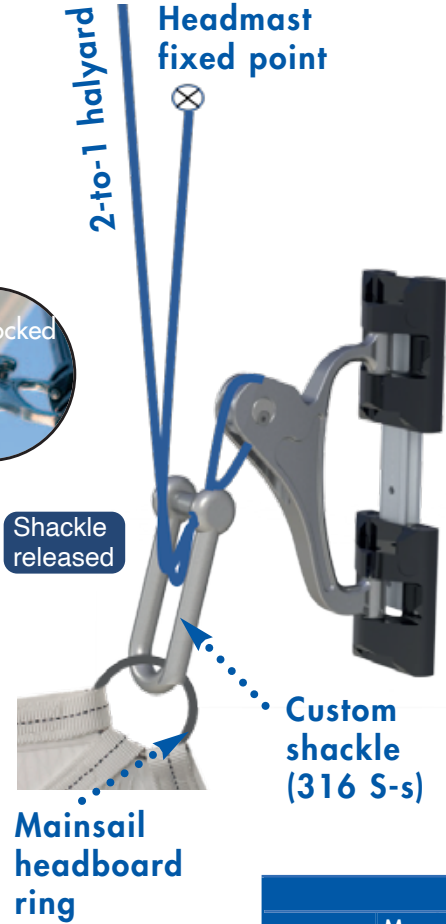
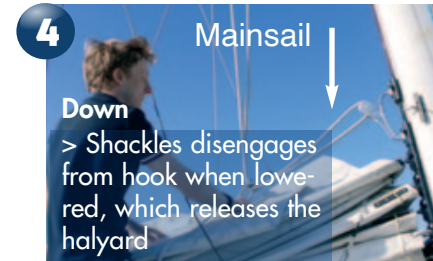
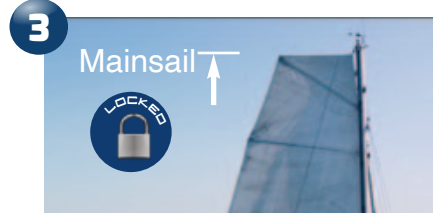
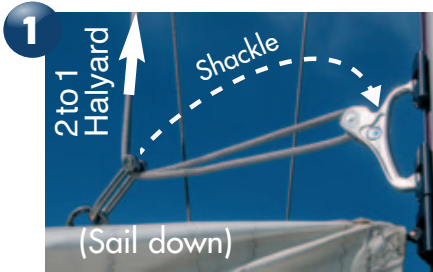
Description and dimensions of the slugs :



Slugs	PL 1 (16mm)	PL 2 (19mm)	PL 3 (23mm)	PL ø 8	PL ø 10	PL ø 14	PL ø 16
Part N°	25200010026 (M5)	25200010028 (M5)	25200010030 (M5)	51095080000 (M5)	25200010033 (M5)	25200010035 (M5)	28051006160 (M6)
Dim.			25200010032 (M6)				
A	5 mm	5 mm	5-6 mm	5 mm	5 mm	5 mm	6 mm
B	16 mm	19 mm	23,7 mm	-	-	-	-
C	9 mm	9 mm	12,4 mm	-	3,8 mm	4,8 mm	-
D	4 mm	4,5 mm	4,8 mm	-	-	-	-
E	6,3 mm	6 mm	7,7 mm	-	-	-	-
F	-	-	-	8 mm	10 mm	14 mm	16 mm



- Catamaran over 40' ( F30/ F40)
- Squared mainsail automatically locked
- Mainsail easily folded
- Simple use : long top batten simply hoisted and lowered along side the boom



Build-in sheave (aluminium)

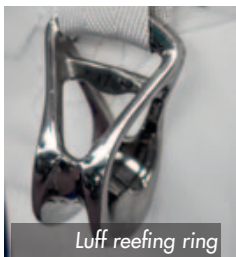
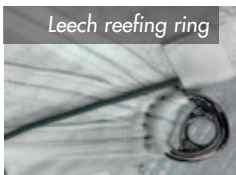


- Adaptation with other brands of batten cars : contact us
- Material : duplex



GAFF LOCK MODELS			
Reference	Max Load	Description	Reference
FT-GL 30	2T5	F30 Gafflock Heaboard Car	54041400650
FT-GL 40	4T	F40 Gafflock Heaboard Car	54041400700
GAFFLOCK/FACSLIDE RETROFIT			
FT-GL 30	2T5	F30 Gafflock toggle retrofit	54043000600
FT-GL 40	4T	F40 Gafflock toggle retrofit	54044000600

MAINSAIL REEFING RINGS WITH WEBBING ATTACHMENT



- Friction rings with various applications for boat sails and mainly mainsail
- Material: Duplex Marine quality stainless steel



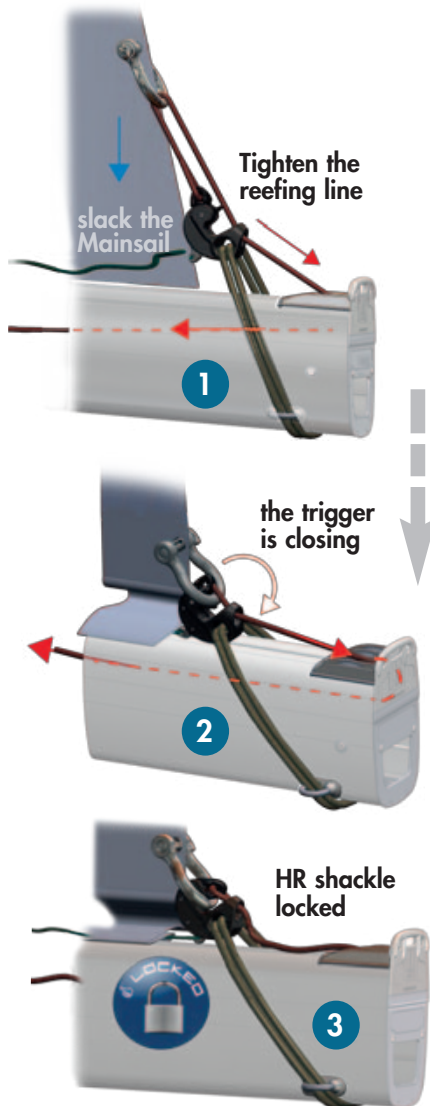
- **Leach reefing ring** : in replacement of reefing blocks.
- **Luff reefing ring** : single line reefing systems or Cunningham

Model	Reference	Max. SWL (tons)	Rope ø (mm)	Dimensions
<b>Leach reefing ring (Rear)</b>				
1T100 SWL	25200010200	1,1	10-12	56 x 59 x 20
2T400 SWL	25200010210	2,4	12-14	70 x 68 x 25
<b>Luff reefing ring (Front)</b>				
1T200 SWL	25200010220	1,2	10-12	45 x 72 x 37



MAINSAIL REEFING LOCKS

High Resistance Main Sail reefing locking system from 35'

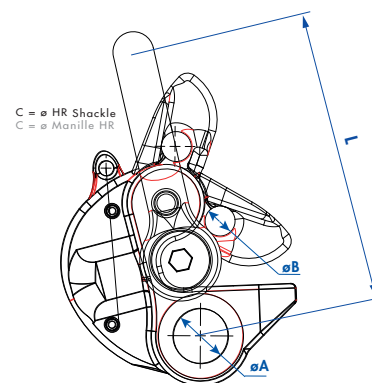


- The HRC locking systems : protects the boom sheaves and reefing lines, subject to high tensions.
- Reduce the compression on the boom section due to the high tension of the reefing line
- Wide range : 3 Sizes HRC 4 / 6 / 9 Tons (SWL)
- Material : Duplex Marine quality stainless steel
- Locking : Release the Mainsail halyard in position and tighten the reefing line (1) up to the locking position of the trigger (2) then release the reefing line and hoist the Mainsail Halyard (3)
- Unlocking : tighten the trigger line and hoist the Mainsail
- Installation by a sailmaker is recommended, depending on the configuration and the efforts on the Mainsail ( please find the list of our distributors on [www.facnor.com](http://www.facnor.com))
- Shackle included



Features

Model	Reference	max. SWL (tons)	approx. Boat length	Weight* (grams)	DIMENSIONS			
					ø A (mm)	ø B (mm)	ø C shackle (mm)	L (mm)
HRC 4T	88931104005	4	Mono 45-55' Multi 45-55'	466	18	10	12	95
HRC 6T	88931106005	6	Mono 55-70' Multi 55-65'	855	22	12	16	121
HRC 9T	88931109005	9	Mono + 65' Multi + 65'	1566	27	14	20	143



VIDEO SUPPORT

Installation of Facnor equipment, use, product information :

VIDEOS - JOIN US ON

FACNOR CHANNEL

<https://www.youtube.com/user/Facnor>



TECHNICAL SUPPORT

Consult the Facnor instructions on our technical support

Instructions for headsail furling & reefing systems, Gennaker & Code zero furlers, Facslide+, former ranges,...

